



GOVERNMENT OF KERALA

Abstract

Health & Family Welfare Department – Academic-Admission to the PG Medical courses in Self Financing Medical Colleges - Seat Matrix for the academic year 2017-18 -Approved- Orders issued

HEALTH & FAMILY WELFARE (S) DEPARTMENT

G.O(Rt)No.1387/2017/H&FWD

Dated, Thiruvananthapuram, 17/05/2017

- Read:- (1) G.O(Rt) No 1365/2017/H&FWD dated 15/05/2017
(2) G.O(Rt) No 1366/2017/H&FWD dated 15/05/2017
(3) G.O.(Rt) No.1373/2017/H&FWD dated 16/05/2017
(4) Letter No B2/24280/2016/DME dated 17/05/2017 from Director of Medical Education, Thiruvananthapuram

ORDER

As per Government orders read(1) and (2) above , the Director of Medical Education has been instructed to prepare the seat matrix for each college and for each course of open seats based on the reservation principles. Accordingly as per Government Order read as 3rd paper above, Government have approved the seat matrix of PG Medical courses in member colleges under KCPCMF and that of Amritha Institute of Medical Science, Health care, Education and Research for the academic year 2017-18.

2) The Director of Medical Education has since submitted the seat matrix for the PG Medical courses in respect of the following self financing medical colleges also for Government approval

- 1) Academy of Medical Sciences, Pariyaram
- 2) Azeezia Medical College, Kollam
- 3) Dr Somervell Memorial CSI Medical College and Hospital, Karakonam
- 4) MES Academy of Medical Sciences, Malappuram
- 5) Sree Gokulam Medical College and research Foundation , Thiruvananthapuram
- 6) Kannur Medical College, Anjarakandy
- 7) KMCT Medical College, Mukkom, Kozhikode
- 8) Sree Narayana Institute of Medical Sciences, Eranakulam
- 9) Travancore Medical College, Kollam.

3) Government have examined the matter in detail and are

pleased to approve the seat matrix of PG Medical courses in respect of the above colleges for the academic year 2017-18 as shown in the annexure to this order

(By Order of the Governor)

Rajeev Sadanandan

Additional Chief secretary to Government

To

The Director of Medical Education, Thiruvananthapuram.

The Commissioner for Entrance Examinations, Thiruvananthapuram


The Manager, Admission Supervisory Committee, Thiruvananthapuram

Self Financing medical Colleges Concerned (Through DME)

The Information Officer, Web & New Media Wing, I&PRD Thiruvananthapuram

Stock File/Office Copy.

Forwarded/By Order



Section Officer

Total state quota seats in Self Financing Medical Colleges for PG Degree Courses - 2017

Sl No	DEGREE COURSES	Total	AMS	Azeezia	SMCSI	MES	Gokulam	Kannur	KMCT	Sree Narayana	Travancore
	Clinical										
1	M.D. Anaesthesia	14	2	1	1	2	6	0	-	-	2
2	M.D. Dermatology, Venereology & Leprosy	2	1	0	0	1	0	0	-	-	-
3	M.D. Emergency Medicine	2	2	0	0	0	0	0	-	-	-
4	M.D. General Medicine	10	3	2	0	2	3	0	-	-	-
5	M.S. General Surgery	6	1	1	1	2	1	0	-	-	-
6	M.S. Obstetrics & Gynaecology	3	0	0	1	1	1	0	-	-	-
7	M.S. Ophthalmology	5	2	1	1	1	0	0	-	-	-
8	M.S. Orthopaedics	2	0	1	0	1	0	0	-	-	-
9	M.S. Otorhinolaryngology	6	2	0	1	1	2	0	-	-	-
10	M.D. Paediatrics	5	1	0	2	1	1	0	-	-	-
11	M.D. Psychiatry	4	2	0	1	1	0	0	-	-	-
12	M.D. Radiodiagnosis	4	1	1	1	-	1	0	-	-	-
13	M.D. Radiotherapy	0	0	0	0	0	0	0	-	-	-
14	M.D. Respiratory Medicine	1	1	0	0	-	0	0	-	-	-
	Non Clinical										
1	M.S. Anatomy	5	0	0	0	1	2	2	-	-	-
2	M.D. Biochemistry	3	0	0	0	0	2	1	-	-	-
3	M.D. Community Medicine	6	2	0	1	1	2	0	-	-	-
4	M.D. Microbiology	6	1	0	0	1	3	1	-	-	-
5	M.D. Pathology	6	2	0	0	1	2	1	-	-	-
6	M.D. Pharmacology	9	0	1	0	1	2	1	2	2	-
7	M.D. Physiology	6	2	0	0	0	2	2	-	-	-
8	M.D. Transfusion Medicine	0	0	0	0	0	0	0	-	-	-
	Total	105	25	8	10	18	30	8	2	2	2

Distribution of state quota seats in Self Financing Medical Colleges for PG Degree Courses - 2017

Sl No	DEGREE COURSES	Total	GM	PH	SC	ST	EZ	MU	BH	LC	BX	KU
	Clinical											
1	M.D. Anaesthesia	14	11		1		1	1				
2	M.D. Dermatology, Venereology & Leprosy	2	1		1							
3	M.D. Emergency Medicine	2	1	1						1	1	
4	M.D. General Medicine	10	5	1	1		1					1
5	M.S. General Surgery	6	5									
6	M.S. Obstetrics & Gynaecology	3	3									
7	M.S. Ophthalmology	5	5									
8	M.S. Orthopaedics	2	2									
9	M.S. Otorhinolaryngology	6	6									
10	M.D. Paediatrics	5	5									
11	M.D. Psychiatry	4	3		1							
12	M.D. Radiodiagnosis	4	2		1	1						
13	M.D. Radiotherapy	0	0									
14	M.D. Respiratory Medicine	1	1									
	Non Clinical											
1	M.S. Anatomy	5	4						1			
2	M.D. Biochemistry	3	2	1								
3	M.D. Community Medicine	6	6									
4	M.D. Microbiology	6	5		1							
5	M.D. Pathology	6	4		1	1						
6	M.D. Pharmacology	9	7		1		1					
7	M.D. Physiology	6	5					1				
8	M.D. Transfusion Medicine	0	0									
	Total	105	83	3	8	2	3	2	1	1	1	1

Distribution of state quota seats in Self Financing Medical Colleges for PG Diploma Courses - 2017

SI No	DIPLOMA COURSES	Total	GM	PH	SC	ST	EZ	MU	BH	LC	BX	KU
	Clinical											
1	Diploma in Anaesthesia	2	2	-	-	-	-	-	-	-	-	-
2	Diploma in Child Health	5	4	1	-	-	-	-	-	-	-	-
3	Diploma in Dermatology & Venereology	1	1	-	-	-	-	-	-	-	-	-
4	Diploma in Obstetrics & Gynaecology	2	1	-	1	-	-	-	-	-	-	-
5	Diploma in Laryngology & Otology	2	1	-	1	-	-	-	-	-	-	-
6	D.M.R.D.	2	1	-	-	-	1	-	-	-	-	-
7	Diploma in Ophthalmology	3	2	-	-	-	-	1	-	-	-	-
8	Diploma in Orthopaedics	3	3	-	-	-	-	-	-	-	-	-
9	Diploma in Psychiatric Medicine	1	1	-	-	-	-	-	-	-	-	-
10	D.T.C.D	1	1	-	-	-	-	-	-	-	-	-
	Non Clinical											
1	Diploma in Clinical Pathology	1	1	-	-	-	-	-	-	-	-	-
	Total	23	18	1	2	0	1	1	0	0	0	0



Distribution of state quota seats in Azeezia Medical College, Kollam for PG Degree Courses - 2017

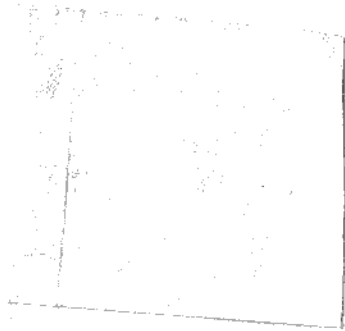
Sl No	DEGREE COURSES	Total	GM	PH	SC	ST	EZ	MU	BH	LC	BX	KU	Community	NRI
	Clinical													
1	M.D. Anaesthesia	1	1	-	-	-	-	-	-	-	-	-	1	-
2	M.D. Dermatology, Venereology & Leprosy	0	0	-	-	-	-	-	-	-	-	-	-	1
3	M.D. Emergency Medicine	0	0	-	-	-	-	-	-	-	-	-	-	-
4	M.D. General Medicine	2	1	-	-	-	1	-	-	-	-	-	1	1
5	M.S. General Surgery	1	1	-	-	-	-	-	-	-	-	-	1	-
6	M.S. Obstetrics & Gynaecology	0	0	-	-	-	-	-	-	-	-	-	-	-
7	M.S. Ophthalmology	1	1	-	-	-	-	-	-	-	-	-	-	-
8	M.S. Orthopaedics	1	1	-	-	-	-	-	-	-	-	-	1	-
9	M.S. Otorhinolaryngology	0	0	-	-	-	-	-	-	-	-	-	-	-
10	M.D. Paediatrics	0	0	-	-	-	-	-	-	-	-	-	-	-
11	M.D. Psychiatry	0	0	-	-	-	-	-	-	-	-	-	-	-
12	M.D. Radiodiagnosis	1	1	-	-	-	-	-	-	-	-	-	1	-
13	M.D. Radiotherapy	0	0	-	-	-	-	-	-	-	-	-	-	-
14	M.D. Respiratory Medicine	0	0	-	-	-	-	-	-	-	-	-	-	-
	Non Clinical													
1	M.S. Anatomy	0	0	-	-	-	-	-	-	-	-	-	-	-
2	M.D. Biochemistry	0	0	-	-	-	-	-	-	-	-	-	-	-
3	M.D. Community Medicine	0	0	-	-	-	-	-	-	-	-	-	-	-
4	M.D. Microbiology	0	0	-	-	-	-	-	-	-	-	-	-	-
5	M.D. Pathology	0	0	-	-	-	-	-	-	-	-	-	-	-
6	M.D. Pharmacology	1	1	-	-	-	-	-	-	-	-	-	-	-
7	M.D. Physiology	0	0	-	-	-	-	-	-	-	-	-	-	-
8	M.D. Transfusion Medicine	0	0	-	-	-	-	-	-	-	-	-	-	-
	Total	8	7	0	0	0	1	0	0	0	0	0	5	2

Distribution of state quota seats in SMCSI Medical College for PG Degree Courses - 2017

Sl No	DEGREE COURSES	Total	GM	PH	SC	ST	EZ	MU	BH	LC	BX	KU	Community	NRI
	Clinical													
1	M.D. Anaesthesia	1	1	-	-	-	-	-	-	-	-	-	1	-
2	M.D. Dermatology, Venereology & Leprosy		0	-	-	-	-	-	-	-	-	-	-	-
3	M.D. Emergency Medicine		0	-	-	-	-	-	-	-	-	-	-	-
4	M.D. General Medicine		0	-	-	-	-	-	-	-	-	-	-	-
5	M.S. General Surgery	1	1	-	-	-	-	-	-	-	-	-	1	-
6	M.S. Obstetrics & Gynaecology	1	1	-	-	-	-	-	-	-	-	-	1	-
7	M.S. Ophthalmology	1	1	-	-	-	-	-	-	-	-	-	2	-
8	M.S. Orthopaedics	0	0	-	-	-	-	-	-	-	-	-	-	1
9	M.S. Otorhinolaryngology	1	1	-	-	-	-	-	-	-	-	-	1	-
10	M.D. Paediatrics	2	1	-	1	-	-	-	-	-	-	-	-	1
11	M.D. Psychiatry	1	1	-	-	-	-	-	-	-	-	-	1	-
12	M.D. Radiodiagnosis	1	0	-	1	-	-	-	-	-	-	-	-	1
13	M.D. Radiotherapy			-	-	-	-	-	-	-	-	-	-	-
14	M.D. Respiratory Medicine			-	-	-	-	-	-	-	-	-	-	-
	Non Clinical													
1	M.S. Anatomy			-	-	-	-	-	-	-	-	-	-	-
2	M.D. Biochemistry			-	-	-	-	-	-	-	-	-	-	-
3	M.D. Community Medicine	1	1	-	-	-	-	-	-	-	-	-	-	-
4	M.D. Microbiology			-	-	-	-	-	-	-	-	-	-	-
5	M.D. Pathology	0		-	-	-	-	-	-	-	-	-	1	-
6	M.D. Pharmacology			-	-	-	-	-	-	-	-	-	-	-
7	M.D. Physiology			-	-	-	-	-	-	-	-	-	-	-
8	M.D. Transfusion Medicine			-	-	-	-	-	-	-	-	-	-	-
	Total	10	8	0	2	0	0	0	0	0	0	0	8	3

Distribution of state quota seats in MES Medical College for PG Degree Courses - 2017

Sl No	DEGREE COURSES	Total	GM	PH	SC	ST	EZ	MU	BH	LC	BX	KU	Community	NRI
	Clinical													
1	M.D. Anaesthesia	2	2	-	-	-	-	-	-	-	-	-	-	-
2	M.D. Dermatology, Venereology & Leprosy	1	1	-	-	-	-	-	-	-	-	-	-	-
3	M.D. Emergency Medicine	0	0	-	-	-	-	-	-	1	-	-	1	1
4	M.D. General Medicine	2	1	-	-	-	-	-	-	-	-	1	1	1
5	M.S. General Surgery	2	1	-	-	-	-	-	-	-	-	-	-	1
6	M.S. Obstetrics & Gynaecology	1	1	-	-	-	-	-	-	-	-	-	-	1
7	M.S. Ophthalmology	1	1	-	-	-	-	-	-	-	-	-	1	-
8	M.S. Orthopaedics	1	1	-	-	-	-	-	-	-	-	-	-	-
9	M.S. Otorhinolaryngology	1	1	-	-	-	-	-	-	-	-	-	-	-
10	M.D. Paediatrics	1	1	-	-	-	-	-	-	-	-	-	-	-
11	M.D. Psychiatry	1	1	-	-	-	-	-	-	-	-	-	-	1
12	M.D. Radiodiagnosis	-	0	-	-	-	-	-	-	-	-	-	-	-
13	M.D. Radiotherapy	0	0	-	-	-	-	-	-	-	-	-	-	-
14	M.D. Respiratory Medicine	-	0	-	-	-	-	-	-	-	-	-	-	1
	Non Clinical													
1	M.S. Anatomy	1	1	-	-	-	-	-	-	-	-	-	1	-
2	M.D. Biochemistry	0	0	-	-	-	-	-	-	-	-	-	1	-
3	M.D. Community Medicine	1	1	-	-	-	-	-	-	-	-	-	1	-
4	M.D. Microbiology	1	1	-	-	-	-	-	-	-	-	-	1	-
5	M.D. Pathology	1	1	-	-	-	-	-	-	-	-	-	1	-
6	M.D. Pharmacology	1	1	-	-	-	-	-	-	-	-	-	-	-
7	M.D. Physiology	0	0	-	-	-	-	-	-	-	-	-	-	-
8	M.D. Transfusion Medicine	0	0	-	-	0	0	0	0	1	0	1	9	6
	Total	18	16	0	0	0	0	0	0	1	0	1	9	6



Distribution of state quota seats in MES Medical College for PG Diploma Courses - 2017

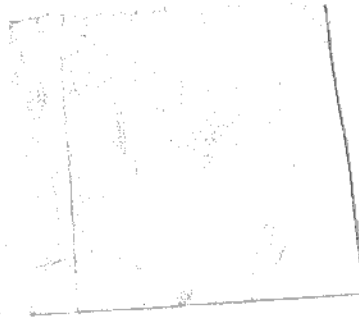
Sl No	DIPLOMA COURSES	Total	GM	PH	SC	ST	EZ	MU	BH	LC	BX	KU	Communt	NRI
	Clinical													
1	Diploma in Anaesthesia	2	2	-	-	-	-	-	-	-	-	-	-	1
2	Diploma in Child Health	2	1	1	-	-	-	-	-	-	-	-	1	-
3	Diploma in Dermatology & Venereology	0	0	-	-	-	-	-	-	-	-	-	-	-
4	Diploma in Obstetrics & Gynaecology	0	0	-	-	-	-	-	-	-	-	-	-	-
5	Diploma in Laryngology & Otology	0	0	-	-	-	-	-	-	-	-	-	-	-
6	D.M.R.D.	1	0	-	-	-	1	-	-	-	-	-	-	1
7	Diploma in Ophthalmology	1	1	-	-	-	-	-	-	-	-	-	-	-
8	Diploma in Orthopaedics	1	1	-	-	-	-	-	-	-	-	-	1	-
9	Diploma in Psychiatric Medicine	1	1	-	-	-	-	-	-	-	-	-	1	-
10	D.T.C.D	1	1	-	-	-	-	-	-	-	-	-	-	-
	Non Clinical													
1	Diploma in Clinical Pathology	1	1	-	-	-	-	-	-	-	-	-	2	-
	Total	10	8	1	0	0	1	0	0	0	0	0	5	2

Distribution of state quota seats in Sree Gokulam Medical College for PG Degree Courses - 2017

Sl No	DEGREE COURSES	Total	GM	PH	SC	ST	EZ	MU	BH	LC	BX	KU	NRI
	Clinical												
1	M.D. Anaesthesia	6	5	-	-	-	1	-	-	-	-	-	-
2	M.D. Dermatology, Venereology & Leprosy	0	0	-	-	-	-	-	-	-	-	-	-
3	M.D. Emergency Medicine	0	0	-	-	-	-	-	-	-	-	-	-
4	M.D. General Medicine	3	1	-	1	-	-	-	-	-	1	-	1
5	M.S. General Surgery	1	1	-	-	-	-	-	-	-	-	-	1
6	M.S. Obstetrics & Gynaecology	1	1	-	-	-	-	-	-	-	-	-	1
7	M.S. Ophthalmology	0	0	-	-	-	-	-	-	-	-	-	1
8	M.S. Orthopaedics	0	0	-	-	-	-	-	-	-	-	-	1
9	M.S. Otorhinolaryngology	2	2	-	-	-	-	-	-	-	-	-	-
10	M.D. Paediatrics	1	1	-	-	-	-	-	-	-	-	-	-
11	M.D. Psychiatry	0	0	-	-	-	-	-	-	-	-	-	-
12	M.D. Radiodiagnosis	1	0	-	-	1	-	-	-	-	-	-	1
13	M.D. Radiotherapy	0	0	-	-	-	-	-	-	-	-	-	-
14	M.D. Respiratory Medicine	0	0	-	-	-	-	-	-	-	-	-	-
	Non Clinical												
1	M.S. Anatomy	2	2	-	-	-	-	-	-	-	-	-	-
2	M.D. Biochemistry	2	1	1	-	-	-	-	-	-	-	-	-
3	M.D. Community Medicine	2	2	-	-	-	-	-	-	-	-	-	-
4	M.D. Microbiology	3	3	-	-	-	-	-	-	-	-	-	-
5	M.D. Pathology	2	1	-	1	-	-	-	-	-	-	-	-
6	M.D. Pharmacology	2	2	-	-	-	-	-	-	-	-	-	-
7	M.D. Physiology	2	2	-	-	-	-	-	-	-	-	-	-
8	M.D. Transfusion Medicine	0	0	-	-	-	-	-	-	-	-	-	-
	Total	30	24	1	2	1	1	0	0	0	1	0	6

Distribution of state quota seats in Sree Gokulam Medical College for PG Diploma Courses - 2017

Sl No	DIPLOMA COURSES	Total	GM	PH	SC	ST	EZ	MU	BH	LC	BX	KU
	Clinical											
1	Diploma in Anaesthesia	0	0	-	-	-	-	-	-	-	-	-
2	Diploma in Child Health	2	2	-	-	-	-	-	-	-	-	-
3	Diploma in Dermatology & Venereology			-	-	-	-	-	-	-	-	-
4	Diploma in Obstetrics & Gynaecology			-	-	-	-	-	-	-	-	-
5	Diploma in Laryngology & Otology	1	0	-	1	-	-	-	-	-	-	-
6	D.M.R.D.	1	1	-	-	-	-	-	-	-	-	-
7	Diploma in Ophthalmology	2	1		-	-	-	1	-	-	-	-
8	Diploma in Orthopaedics	1	1	-	-	-	-	-	-	-	-	-
9	Diploma in Psychiatric Medicine	0	0	-	-	-	-	-	-	-	-	-
10	D.T.C.D	0	0	-	-	-	-	-	-	-	-	-
	Non Clinical											
1	Diploma in Clinical Pathology	0	0	-	-	-	-	-	-	-	-	-
	Total	7	5	0	1	0	0	1	0	0	0	0



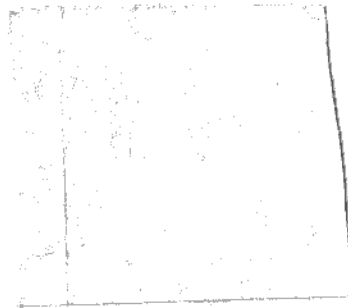
Distribution of state quota seats in Kannur Medical College for PG Degree Courses - 2017

Sl No	DEGREE COURSES	Total	GM	PH	SC	ST	EZ	MU	BH	LC	BX	KU	Communi	NRI
	Clinical													
1	M.D. Anaesthesia	0	0	-	-	-	-	-	-	-	-	-	-	-
2	M.D. Dermatology, Venereology & Leprosy	0	0	-	-	-	-	-	-	-	-	-	-	1
3	M.D. Emergency Medicine	0	0	-	-	-	-	-	-	-	-	-	-	-
4	M.D. General Medicine	0	0	-	-	-	-	-	-	-	-	-	-	-
5	M.S. General Surgery	0	0	-	-	-	-	-	-	-	-	-	-	-
6	M.S. Obstetrics & Gynaecology	0	0	-	-	-	-	-	-	-	-	-	-	-
7	M.S. Ophthalmology	0	0	-	-	-	-	-	-	-	-	-	1	1
8	M.S. Orthopaedics	0	0	-	-	-	-	-	-	-	-	-	-	-
9	M.S. Otorhinolaryngology	0	0	-	-	-	-	-	-	-	-	-	-	-
10	M.D. Paediatrics	0	0	-	-	-	-	-	-	-	-	-	-	-
11	M.D. Psychiatry	0	0	-	-	-	-	-	-	-	-	-	-	-
12	M.D. Radiodiagnosis	0	0	-	-	-	-	-	-	-	-	-	2	-
13	M.D. Radiotherapy	0	0	-	-	-	-	-	-	-	-	-	1	1
14	M.D. Respiratory Medicine	0	0	-	-	-	-	-	-	-	-	-	-	-
	Non Clinical													
1	M.S. Anatomy	2	1	-	-	-	-	-	1	-	-	-	-	-
2	M.D. Biochemistry	1	1	-	-	-	-	-	-	-	-	-	-	-
3	M.D. Community Medicine	0	0	-	-	-	-	-	-	-	-	-	2	-
4	M.D. Microbiology	1	0	-	1	-	-	-	-	-	-	-	1	-
5	M.D. Pathology	1	1	-	-	-	-	-	-	-	-	-	1	-
6	M.D. Pharmacology	1	1	-	-	-	-	-	-	-	-	-	1	-
7	M.D. Physiology	2	1	-	-	-	-	1	-	-	-	-	-	-
8	M.D. Transfusion Medicine	0	0	-	-	-	-	-	-	-	-	-	-	-
	Total	8	5	0	1	0	0	1	1	0	0	0	9	3



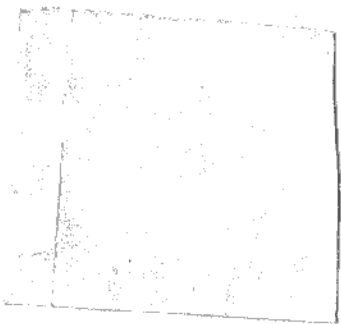
Distribution of state quota seats in KMCT Medical College, Kozhikode, for PG Degree Courses - 2017

Sl No	DEGREE COURSES	Total	GM	PH	SC	ST	EZ	MU	BH	LC	BX	KU	NRI
	Clinical												
1	M.D. Anaesthesia	-	-	-	-	-	-	-	-	-	-	-	-
2	M.D. Dermatology, Venereology & Leprosy	-	-	-	-	-	-	-	-	-	-	-	-
3	M.D. Emergency Medicine	-	-	-	-	-	-	-	-	-	-	-	-
4	M.D. General Medicine	-	-	-	-	-	-	-	-	-	-	-	-
5	M.S. General Surgery	-	-	-	-	-	-	-	-	-	-	-	-
6	M.S. Obstetrics & Gynaecology	-	-	-	-	-	-	-	-	-	-	-	-
7	M.S. Ophthalmology	-	-	-	-	-	-	-	-	-	-	-	-
8	M.S. Orthopaedics	-	-	-	-	-	-	-	-	-	-	-	1
9	M.S. Otorhinolaryngology	-	-	-	-	-	-	-	-	-	-	-	-
10	M.D. Paediatrics	-	-	-	-	-	-	-	-	-	-	-	-
11	M.D. Psychiatry	-	-	-	-	-	-	-	-	-	-	-	-
12	M.D. Radiodiagnosis	-	-	-	-	-	-	-	-	-	-	-	-
13	M.D. Radiotherapy	-	-	-	-	-	-	-	-	-	-	-	-
14	M.D. Respiratory Medicine	-	-	-	-	-	-	-	-	-	-	-	-
	Non Clinical												
1	M.S. Anatomy	-	-	-	-	-	-	-	-	-	-	-	-
2	M.D. Biochemistry	-	-	-	-	-	-	-	-	-	-	-	-
3	M.D. Community Medicine	-	-	-	-	-	-	-	-	-	-	-	-
4	M.D. Microbiology	-	-	-	-	-	-	-	-	-	-	-	-
5	M.D. Pathology	-	-	-	-	-	-	-	-	-	-	-	-
6	M.D. Pharmacology	2	1	-	1	-	-	-	-	-	-	-	-
7	M.D. Physiology	-	-	-	-	-	-	-	-	-	-	-	-
8	M.D. Transfusion Medicine	-	-	-	-	-	-	-	-	-	-	-	-
	Total	2	1	0	1	0	0	0	0	0	0	0	1



Distribution of state quota seats in Sree Narayana Institute of Medical Sciences, Ernakulam for PG Degree Courses - 2017

Sl No	DEGREE COURSES	Total	GM	PH	SC	ST	EZ	MU	BH	LC	BX	KU
	Clinical											
1	M.D. Anaesthesia	-	-	-	-	-	-	-	-	-	-	-
2	M.D. Dermatology, Venereology & Leprosy	-	-	-	-	-	-	-	-	-	-	-
3	M.D. Emergency Medicine	-	-	-	-	-	-	-	-	-	-	-
4	M.D. General Medicine	-	-	-	-	-	-	-	-	-	-	-
5	M.S. General Surgery	-	-	-	-	-	-	-	-	-	-	-
6	M.S. Obstetrics & Gynaecology	-	-	-	-	-	-	-	-	-	-	-
7	M.S. Ophthalmology	-	-	-	-	-	-	-	-	-	-	-
8	M.S. Orthopaedics	-	-	-	-	-	-	-	-	-	-	-
9	M.S. Otorhinolaryngology	-	-	-	-	-	-	-	-	-	-	-
10	M.D. Paediatrics	-	-	-	-	-	-	-	-	-	-	-
11	M.D. Psychiatry	-	-	-	-	-	-	-	-	-	-	-
12	M.D. Radiodiagnosis	-	-	-	-	-	-	-	-	-	-	-
13	M.D. Radiotherapy	-	-	-	-	-	-	-	-	-	-	-
14	M.D. Respiratory Medicine	-	-	-	-	-	-	-	-	-	-	-
	Non Clinical											
1	M.S. Anatomy	-	-	-	-	-	-	-	-	-	-	-
2	M.D. Biochemistry	-	-	-	-	-	-	-	-	-	-	-
3	M.D. Community Medicine	-	-	-	-	-	-	-	-	-	-	-
4	M.D. Microbiology	-	-	-	-	-	-	-	-	-	-	-
5	M.D. Pathology	-	-	-	-	-	-	-	-	-	-	-
6	M.D. Pharmacology	2	1	-	-	-	1	-	-	-	-	-
7	M.D. Physiology	-	-	-	-	-	-	-	-	-	-	-
8	M.D. Transfusion Medicine	-	-	-	-	-	-	-	-	-	-	-
	Total	2	1	0	0	0	1	0	0	0	0	0



Distribution of state quota seats in Travancore Medical College for PG Degree Courses - 2017

Sl No	DEGREE COURSES	Total	GM	PH	SC	ST	EZ	MU	BH	LC	BX	KU	Commy (MU)	Commy NRI(MU)
	Clinical													
1	M.D. Anaesthesia	2	1	-	-	-	-	1	-	-	-	-	-	-
2	M.D. Dermatology, Venereology & Leprosy	-	-	-	-	-	-	-	-	-	-	-	-	-
3	M.D. Emergency Medicine	-	-	-	-	-	-	-	-	-	-	-	2	-
4	M.D. General Medicine	-	-	-	-	-	-	-	-	-	-	-	-	-
5	M.S. General Surgery	-	-	-	-	-	-	-	-	-	-	-	-	-
6	M.S. Obstetrics & Gynaecology	-	-	-	-	-	-	-	-	-	-	-	-	1
7	M.S. Ophthalmology	-	-	-	-	-	-	-	-	-	-	-	-	-
8	M.S. Orthopaedics	-	-	-	-	-	-	-	-	-	-	-	-	-
9	M.S. Otorhinolaryngology	-	-	-	-	-	-	-	-	-	-	-	-	-
10	M.D. Paediatrics	-	-	-	-	-	-	-	-	-	-	-	-	-
11	M.D. Psychiatry	-	-	-	-	-	-	-	-	-	-	-	-	-
12	M.D. Radiodiagnosis	-	-	-	-	-	-	-	-	-	-	-	-	-
13	M.D. Radiotherapy	-	-	-	-	-	-	-	-	-	-	-	-	-
14	M.D. Respiratory Medicine	-	-	-	-	-	-	-	-	-	-	-	-	-
	Non Clinical													
1	M.S. Anatomy	-	-	-	-	-	-	-	-	-	-	-	-	-
2	M.D. Biochemistry	-	-	-	-	-	-	-	-	-	-	-	-	-
3	M.D. Community Medicine	-	-	-	-	-	-	-	-	-	-	-	-	-
4	M.D. Microbiology	-	-	-	-	-	-	-	-	-	-	-	-	-
5	M.D. Pathology	-	-	-	-	-	-	-	-	-	-	-	-	-
6	M.D. Pharmacology	-	-	-	-	-	-	-	-	-	-	-	-	-
7	M.D. Physiology	-	-	-	-	-	-	-	-	-	-	-	-	-
8	M.D. Transfusion Medicine	-	-	-	-	-	-	-	-	-	-	-	-	-
	Total	2	1	0	0	0	0	1	0	0	0	0	2	1